

# 300 BLACKOUT SUBSONIC

## 190 gr. SUB-X™ TAP®



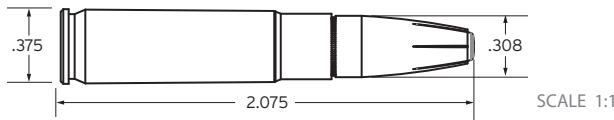
### ITEM NO. 80895

#### Performance Characteristics:

- Minimal deflection on glass
- Meets FBI barrier penetration protocol
- High Retained Weight
- MADE In THE USA
- Net Explosive Weight (approx. per box): 0.0393 lbs

### CASE: 300 BLACKOUT

- Manufacturer's name (Hornady) and caliber designation (300 BLK) imprinted on case head
- **Characteristics:** High quality annealed brass alloy



### BULLET: SUB-X™ TAP®

- **Ballistic Coefficient:** .437
- **Sectional Density:** .286
- **Bullet Length:** 1.328"
- **Recommended Rifling Twist Rate:** 1:8"
- **Characteristics:** Polymer tipped, expanding
- **Push/Pull:** 60/60



### POWDER & PRIMER

- **Powder:** Temperature stable with flash suppressant
- **Primer:** Small rifle, staked primer pocket



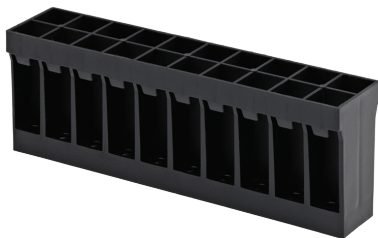
### LOT NUMBERS

- Lot numbers on each box and case

### BALLISTIC DATA

	Muzzle	100 yds	200 yds	300 yds	400 yds	500 yds
<b>Velocity (fps)</b>	1050	998	955	918	885	856
<b>Energy (ft lbs)</b>	465	420	384	355	331	309
<b>Trajectory (in)</b>	-1.5	0	-33.4	-104.9	-217.7	-375.1

### PACKAGING



- Tray: Item No. 8407

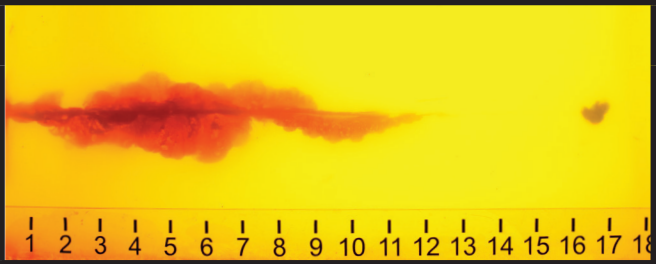
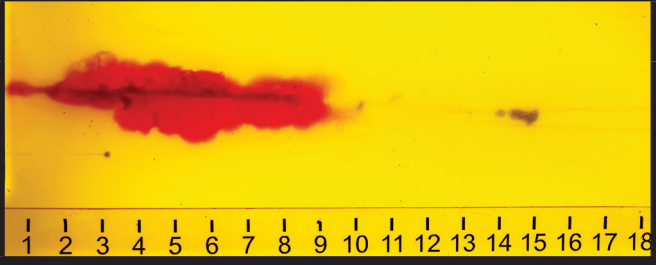
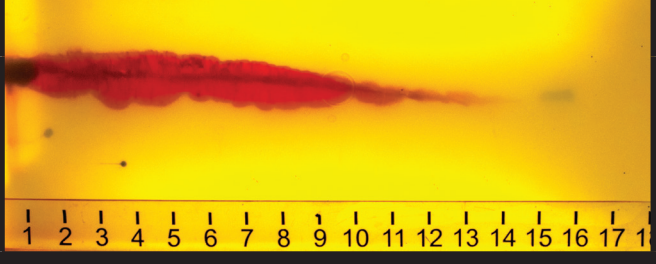
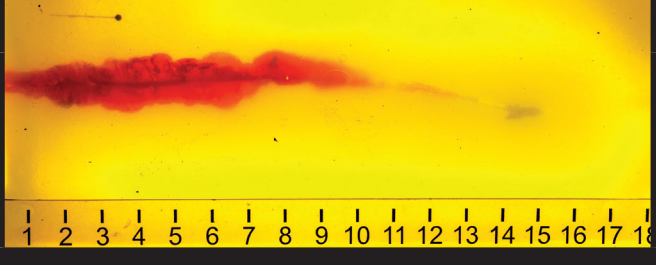

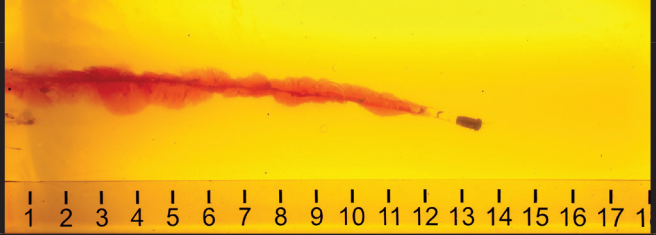


- Box Weight: 1.20 lbs
- Gross Weight: 1.27 lbs
- 20 rounds per box with plastic tray



- Carton: Item No. 8420
- Carton Weight: 12.7 lbs
- Carton Dimensions: 5.0" x 5.25" x 7.0"
- 10 boxes per carton | 200 rounds per carton

**300 BLACKOUT**  
**190 gr. SUB-X™ TAP®**  
**8" BBL | 1:8" Twist | MC6 PDW**  
**ITEM NO. 80895**

	Total Penetration	Max Cavity	Depth to Max Cavity	Initial Penetration	Retained Weight	Retained Weight %	Expanded Diameter	Velocity (fps)	
	17.0"	3.5"	5.0"	0.5"	174.0 gr.	92%	0.57"	998	BARE GELATIN
	15.5"	2.5"	4.0"	0.75"	171.6 gr.	90%	0.59"	978	HVY CLOTHING
	16.5"	1.75"	2.75"	0.0"	189.9 gr.	100%	0.49"	977	STEEL
	16.0"	1.75"	4.0"	0.0"	186.7 gr.	98%	0.42"	997	WALLBOARD
	16.5"	1.75"	5.0"	0.25"	190.0 gr.	100%	0.52"	992	PLYWOOD
	14.0"	1.5"	3.5"	0.0"	128.3 gr.	68%	0.41"	985	AUTO GLASS

# 300 BLACKOUT SUBSONIC

## 190 gr. SUB-X™ TAP®



Item #80895						
10.5" Noveske® 1:8"	Muzzle	100 yds	200 yds	300 yds	400 yds	500 yds
Velocity (fps)	1047	996	954	917	884	855
Energy (ft lbs)	462	418	384	355	330	308
Trajectory (inches)	-1.5	0.0	-33.5	-105.2	-218.3	-375.9
8" LMT 1:8"	Muzzle	100 yds	200 yds	300 yds	400 yds	500 yds
Velocity (fps)	1041	991	949	913	881	852
Energy (ft lbs)	457	414	380	352	328	306
Trajectory (inches)	-1.5	0.0	-33.8	-106.5	-220.4	-379.4
9" AAC 1:8"	Muzzle	100 yds	200 yds	300 yds	400 yds	500 yds
Velocity (fps)	1050	998	956	919	886	856
Energy (ft lbs)	465	420	385	356	331	309
Trajectory (inches)	-1.5	0.0	-33.4	-104.6	-217.3	-374.2

\*Test data used on packaging label