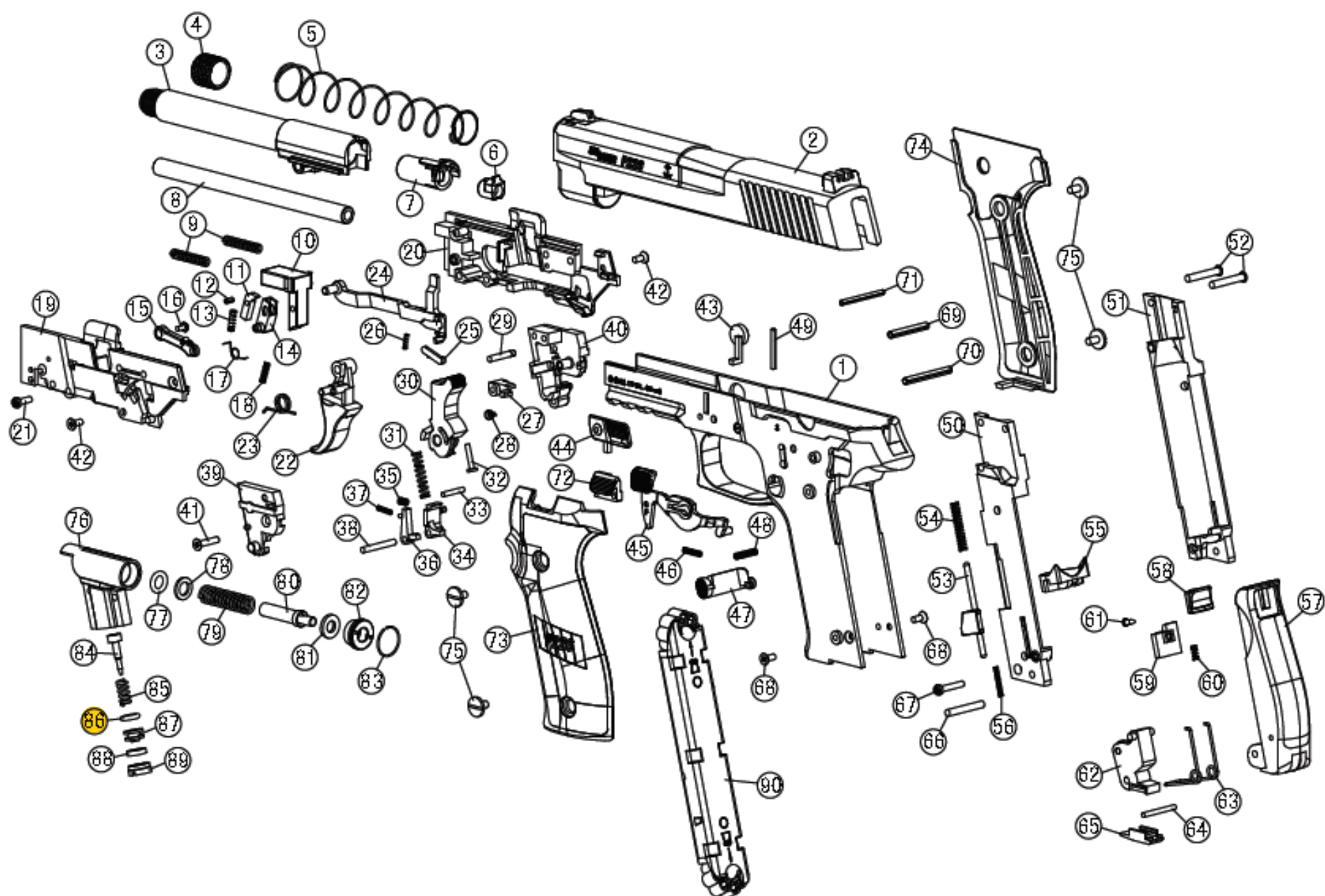


P226 Exploded diagram



| | | | |
|---------------------------|---------------------------------|---------------------------------|-------------------------|
| 1. Frame | 26. Trigger Bar Plunger Spring | 51. Puncture Frame Right | 76. Valve Body |
| 2. Slide Assembly | 27. Hammer Block Piece | 52. Valve Body Pin | 77. O-ring P-6 Urethane |
| 3. Outer Barrel | 28. Hammer Block Piece Spring | 53. Magazine Release | 78. Valve Washer |
| 4. Muzzle Cap | 29. Hammer Block Piece Pin | 54. Magazine Release Spring | 79. Valve Spring |
| 5. Recoil Spring | 30. Hammer | 55. Cylinder Base | 80. Valve Pin |
| 6. Chamber Sleeve | 31. Hammer Spring | 56. Cylinder Base Spring | 81. Valve Seal |
| 7. Outer Barrel End | 32. Hammer Spring Guide | 57. Back Grip | 82. Valve Cap |
| 8. Inner Barrel | 33. Hammer Spring Pressure Pin | 58. Grip Switch | 83. Piston Ring |
| 9. Buffer Spring | 34. Sear | 59. Grip Switch Nail | 84. Pierce Pin |
| 10. Slide Block | 35. Sear Spring | 60. Grip Switch Spring | 85. Pierce Spring |
| 11. Nail | 36. Inner Safety | 61. Grip Switch Screw | 86. O-ring P-5 Urethane |
| 12. Nail Pin | 37. Inner Safety Spring | 62. Puncture Clamp | 87. Pierce Ring |
| 13. Nail Spring | 38. Sear Pin | 63. Puncture Clamp Spring | 88. Pierce Seal |
| 14. Nail Base | 39. Hammer Base Left | 64. Puncture Clamp Spring Pin | 89. Pierce Cap |
| 15. Nail Arm | 40. Hammer Base Right | 65. Puncture Clamp Bottom | 90. Magazine |
| 16. Nail Arm Screw | 41. Hammer Base Screw (Long) | 66. Puncture Clamp Pin | |
| 17. Nail Base Spring | 42. Hammer Base Screw (short) | 67. Puncture Frame Screw | |
| 18. Nail Arm Spring | 43. Dummy Take Down Lever Right | 68. Frame Screw | |
| 19. Mechanism Frame Left | 44. Dummy Take Down Lever Left | 69. Mechanism Frame Pin (short) | |
| 20. Mechanism Frame Right | 45. Safety Lever | 70. Mechanism Frame Pin (long) | |
| 21. Mechanism Frame Screw | 46. Safety Lever Spring | 71. Slide Block Pin | |
| 22. Trigger | 47. Magazine Catch | 72. Dummy Slide Stop | |
| 23. Trigger Spring | 48. Magazine Catch Spring | 73. Grip Left | |
| 24. Trigger Bar | 49. Magazine Catch Pin | 74. Grip Right | |
| 25. Trigger Bar Plunger | 50. Puncture Frame Left | 75. Grip Screw | |